




PHARMA AUTOMATIC LOGISTICS SOLUTIONS

**Total supplier of automated
end-of-line solutions**





Together we create solutions that suit your needs

Efficiency means everything, no matter what industry you are in. It keeps costs down and ensures that your production runs smoothly. For more than 25 years, we at Sealing System have developed and produced end-of-line solutions for companies wanting to streamline, improve and secure the future of their business through automation.

We specialize in creating intelligent packaging solutions, giving your business a smooth and efficient package flow — whether you need a stand-alone packaging machine or a complex packaging and palletizing solution.

Trust is crucial. With us, you are never just another customer in the line. We see you as an important partner. By combining your knowledge of your products and production with our expertise in intelligent packaging solutions, we create the best solutions for your needs.

INNOVATIVE AND FUTURE-PROOF SOLUTIONS

Intelligent packaging solutions

Sealing System is one of Scandinavia's leading suppliers of complete packaging and palletizing solutions. We offer solutions from stand-alone packaging machines to complete, automatic filling, packaging and palletizing systems.

Leave project management to us! As a turnkey supplier, we specialize in integrating machines and controls into one efficient solution. We manage the entire process — from layout and project planning to the delivery of the final solution, ready for use. Our service department is responsible for future maintenance, ensuring the longevity and reliability of your investment.

When you choose a solution from Sealing System, our top priority is to contribute to the success, development and growth of your business. We employ approximately 180 skilled and committed employees who have extensive knowledge and experience in system and machine solutions. In other words, we have a strong team that is dedicated to creating value through efficiency improvements. — and the results speak for themselves.

Automation gains:

- Profitable return on investment
- Innovative and future-proof solutions
- Production optimization
- Optimization of workflows

DISCOVER THE FUTURE WITH OUR AUTOMATIC PHARMA SOLUTIONS

Transform your pharmacy workflow with cutting-edge technology

In the fast-paced and demanding world of pharmacy operations, staying at the forefront of efficiency and safety is imperative. Our automatic pharma solutions are meticulously crafted to revolutionize your processes, ensuring that you stay ahead of the curve in the competitive pharmaceutical landscape.

Key benefits

Prevent work-related lifting injuries

Eliminate the risk factor: Our state-of-the-art solutions are crafted to significantly reduce the risk of workplace-related lifting injuries. By automating the product handling and transport of products, this safeguards your staff and fosters a healthier and more secure work environment.

Operate around the clock

Non-stop productivity: A workflow that is not constrained by fatigue or the need for rest is no longer a fantasy. Our sophisticated systems empower your operations to run continuously, 24/7. Maximize your facility's output while meeting tight deadlines and fulfilling consumer demands without interruption.

Cut labor costs and boost profit

Economical efficiency: Labor expenses have a substantial impact on your profit margins. Our customized solutions reduce the necessity for manual effort by automating essential operational segments. The subsequent decrease in labor costs allows for personnel to be reassigned to roles requiring human expertise. The culmination of increased efficiency is a notable uptick in your business's profitability.



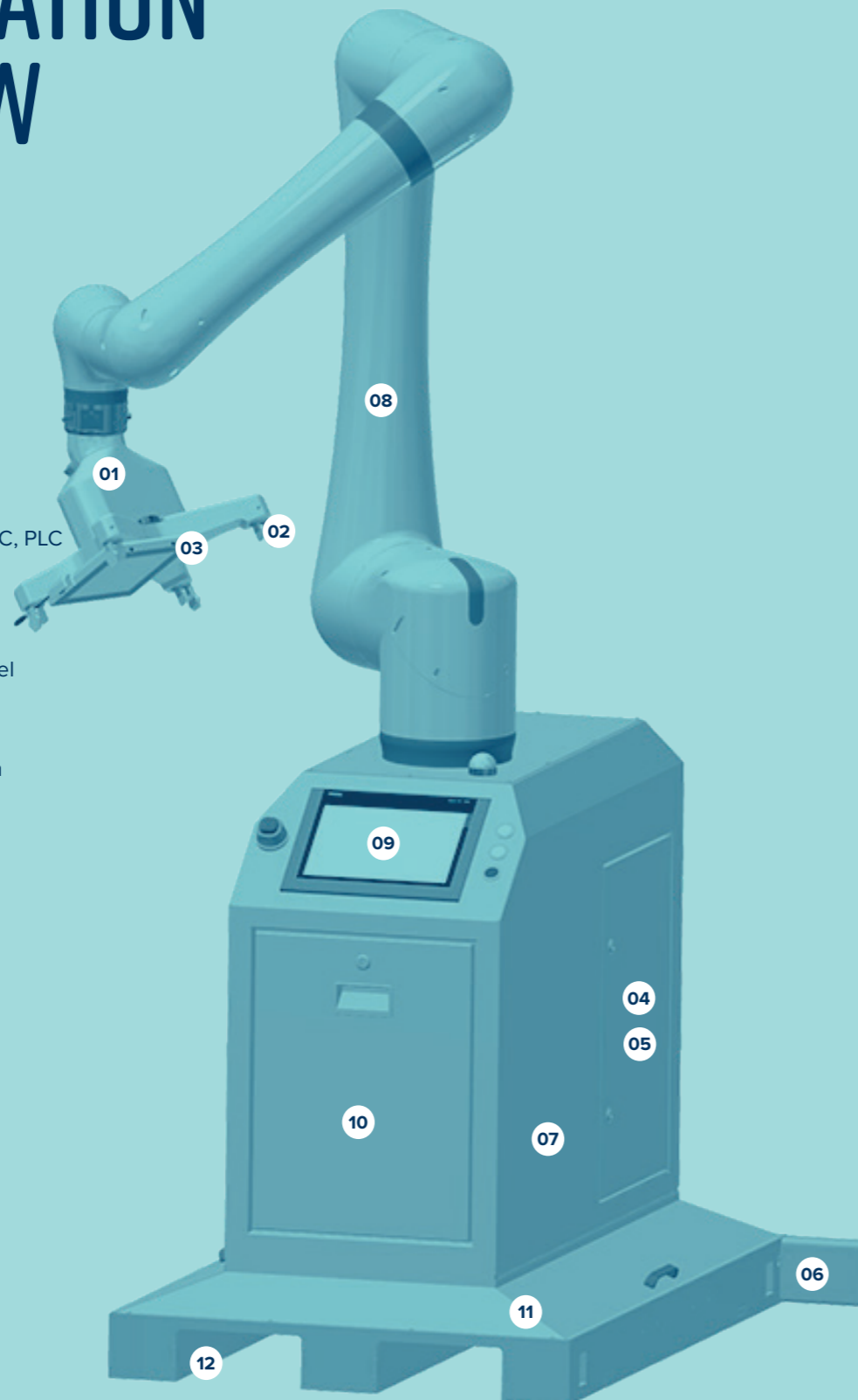
COBOT SPECIFICATION OVERVIEW

Features

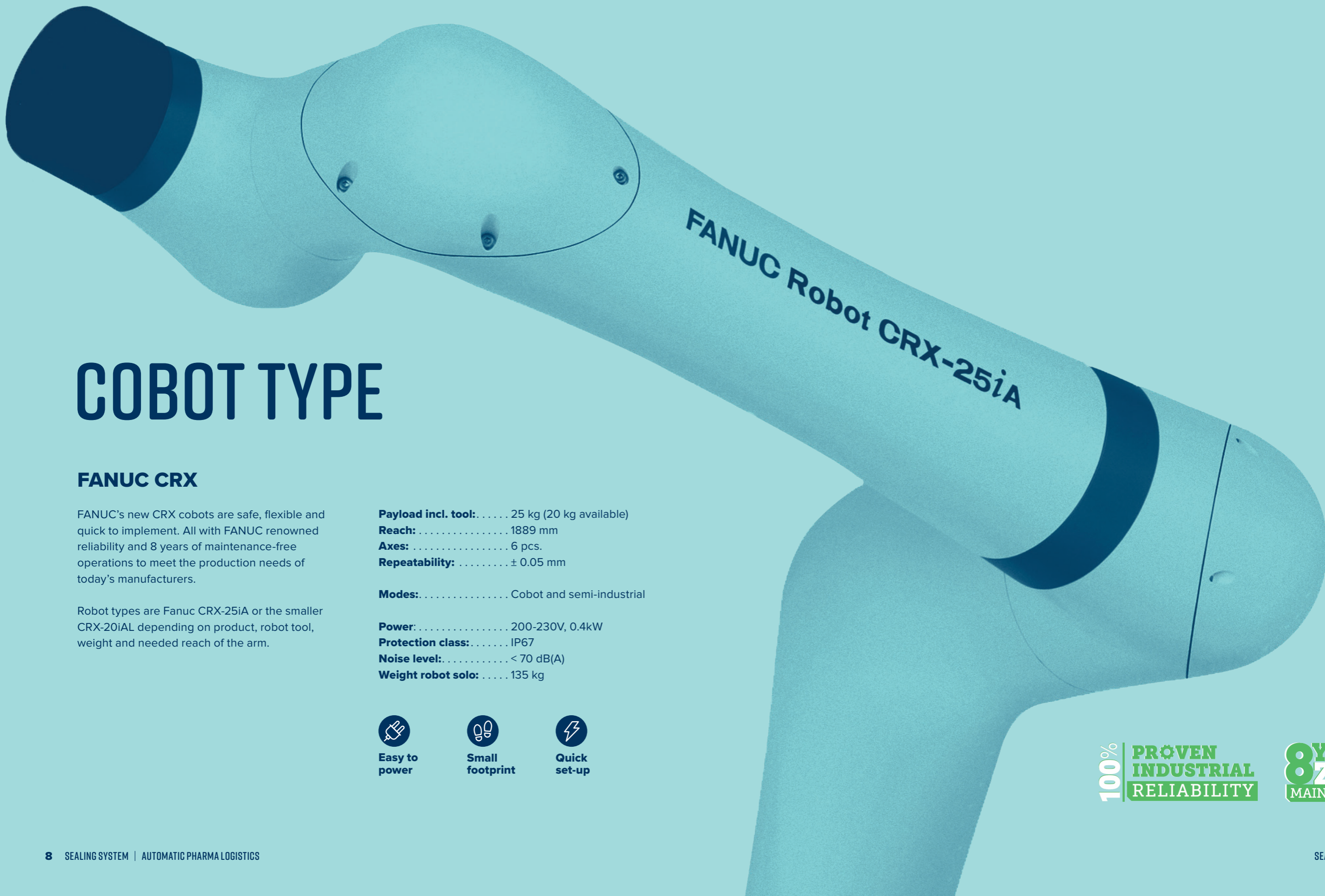
- 01 Changeable tool
- 02 Pneumatic grippers or vacuum suction cups
- 03 Option: Vision & light system
- 04 Electric power panel 230V AC
- 05 Opposit housing side is 24V DC, PLC – and sensor panel
- 06 Pallet detector
- 07 Surface: Brushed stainless steel
- 08 Fanuc 20kg and 25kg
- 09 12” Interactive operator screen
- 10 Cobot control cabinet and service pendant screen
- 11 4 pcs. corner floor fixtures
- 12 Forklift pockets for movability



3 pieces safety zone sensors for increased speed



- Changeable tool
- Pneumatic grippers or vacuum suction cups
- Option: Vision & light system



COBOT TYPE

FANUC CRX

FANUC's new CRX cobots are safe, flexible and quick to implement. All with FANUC renowned reliability and 8 years of maintenance-free operations to meet the production needs of today's manufacturers.

Robot types are Fanuc CRX-25iA or the smaller CRX-20iAL depending on product, robot tool, weight and needed reach of the arm.

Payload incl. tool: 25 kg (20 kg available)
Reach: 1889 mm
Axes: 6 pcs.
Repeatability: ± 0.05 mm

Modes: Cobot and semi-industrial

Power: 200-230V, 0.4kW
Protection class: IP67
Noise level: < 70 dB(A)
Weight robot solo: 135 kg



Easy to power



Small footprint



Quick set-up

100% | PROVEN INDUSTRIAL RELIABILITY

8 YEARS ZERO MAINTENANCE

INNOVATIVE AND FUTURE-PROOF SOLUTIONS

Revolutionize your production line with our advanced Tub depalletizing robot cell

Experience the epitome of efficiency and precision in your production process with our Tub depalletizing robot cell, designed specifically for handling syringe tubs. Our advanced system ensures continuous operation and optimizes your packaging handling with unparalleled accuracy and speed.

Transform your production process today

With our Tub depalletizing robot cell, you can expect a improvement in your product handling, leading to significant enhancements in both productivity and quality. Let us help you take your production environment to the next level with the efficient and technologically advanced solution.

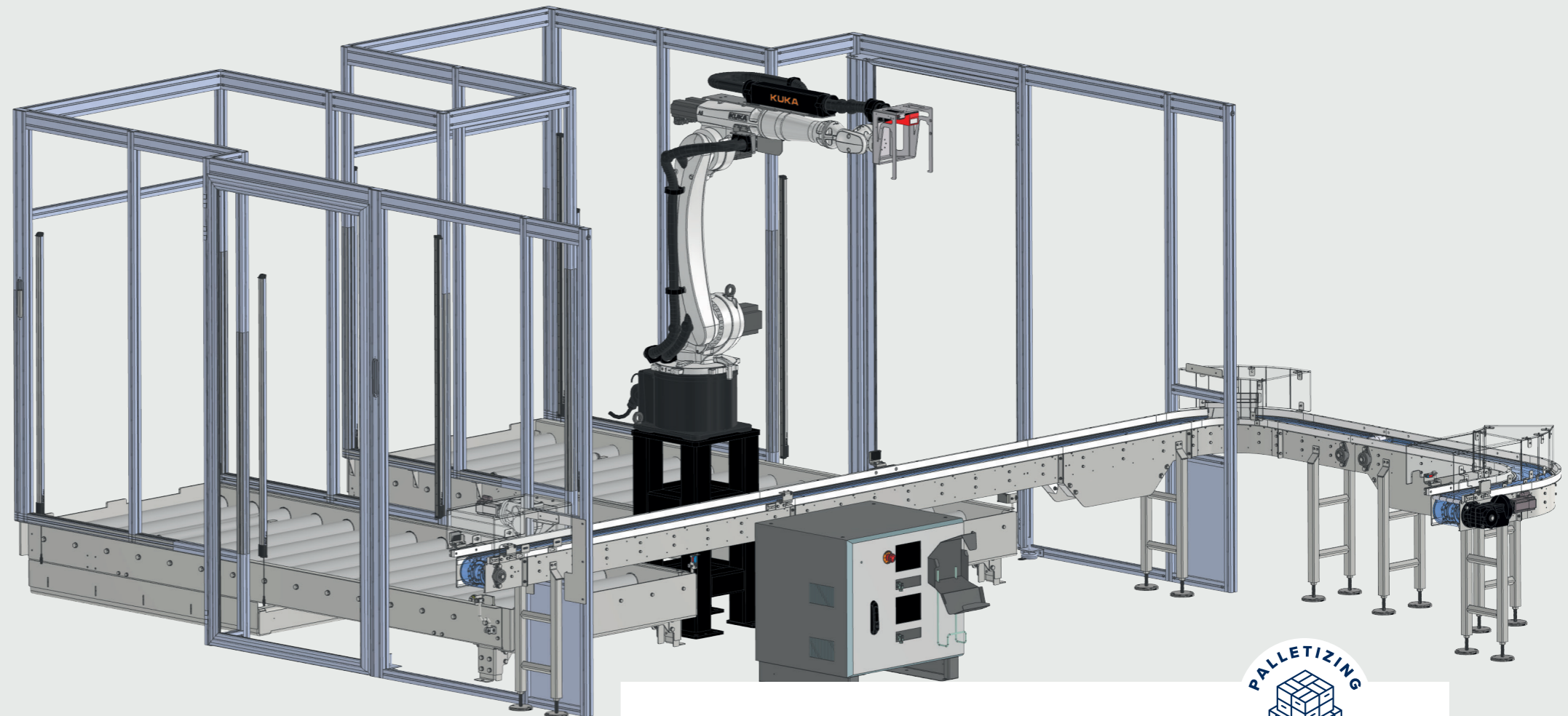
Benefits of our Tub depalletizing robot cell

Enhanced efficiency: Reduce manual handling and optimize the speed of your production line with our automation technology.

Higher Accuracy: Minimize errors and increase the precision of your tub handling with our advanced sensor and robotics technology.

Greater up-time: Our intelligent system design ensures that your production runs without interruptions, maximizing your output potential.

Easy integration: Easy to integrate with existing production lines and systems, making the transition to automation smooth and cost-effective.



Key features

Continuous operation: With two pallet introduction stations equipped with barcode scanners, our system ensures a seamless workflow, guaranteeing maximum productivity around the clock. There's no downtime, just uninterrupted production efficiency.

20 kg KUKA robot: The heart of our depalletizer is a robust 20 kg KUKA robot, known for its reliability and precision. This robot is specially designed to handle syringe tubs with finesse and strength.

Tub sliding tool: Equipped with a specially designed tub sliding tool, our robot cell ensures a gentle and efficient transfer of tubs from pallets to the production line, minimizing the risk of damage to both tubs and contents.

Integrated laser sensor for Tub recognition: Our system utilizes the latest in laser sensing technology to ensure flawless recognition and handling of syringe tubs. This advanced feature enables error-free operation, even under the most demanding production conditions.

Elevate your efficiency with our Depalletizer full tray robot cell

Discover unparalleled productivity and precision on your production line with our advanced Depalletizer full tray robot cell. Engineered for continuous operation and equipped with cutting-edge technology.

Transform your production line

The De-palletizer full tray robot cell isn't just a machine, it's your next step towards modernizing your manufacturing process. Enhance your productivity, quality, and efficiency with our custom-made solution.

Why our system?

- 24/7 productivity: Keep your production line moving without interruption.
- Precision handling: Minimize errors with our robot and vision system.
- Seamless integration: Easily fits into your current setup, enhancing efficiency without hassle.
- User-friendly: Simple operation for a stress-free production environment.



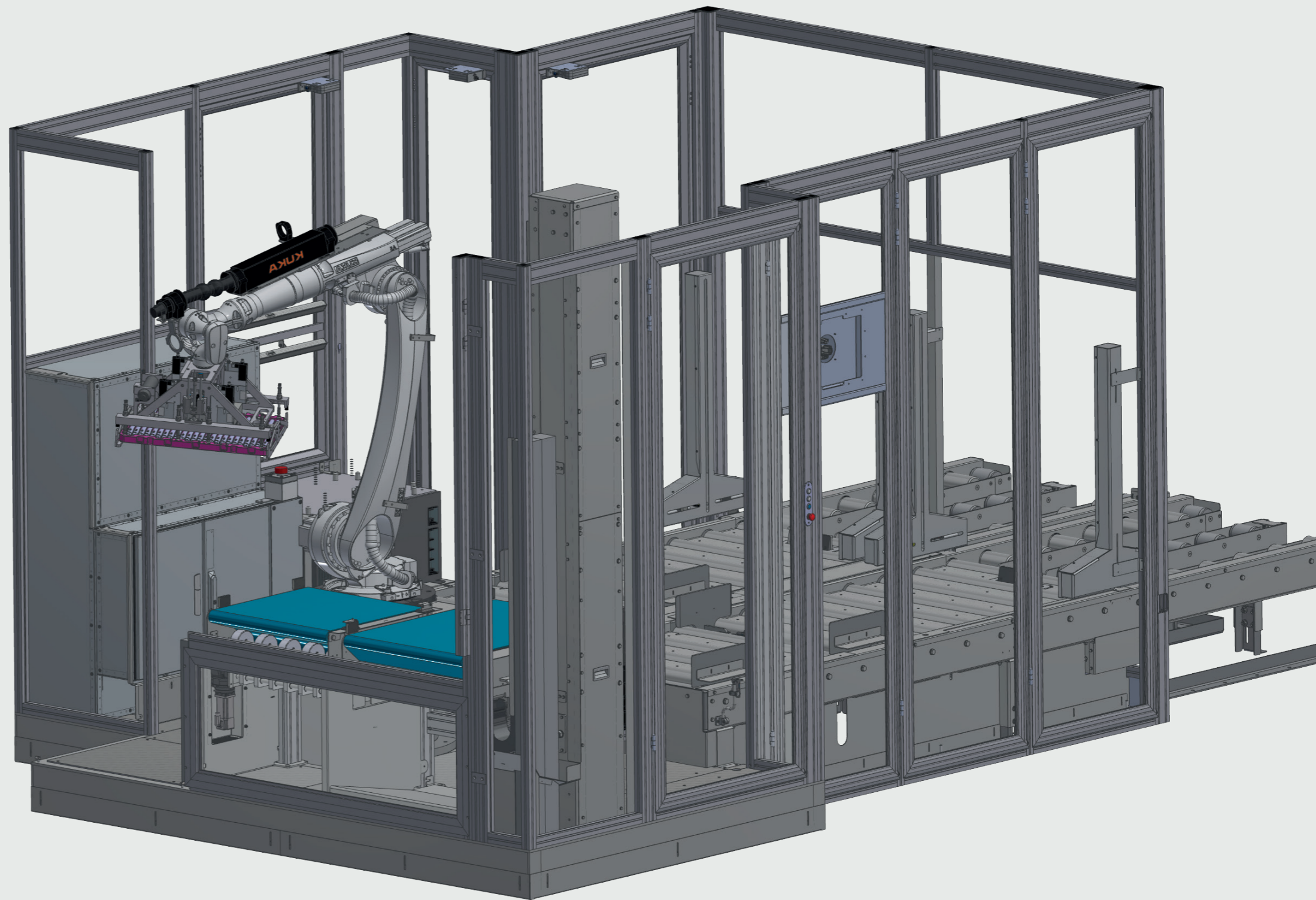
Key features

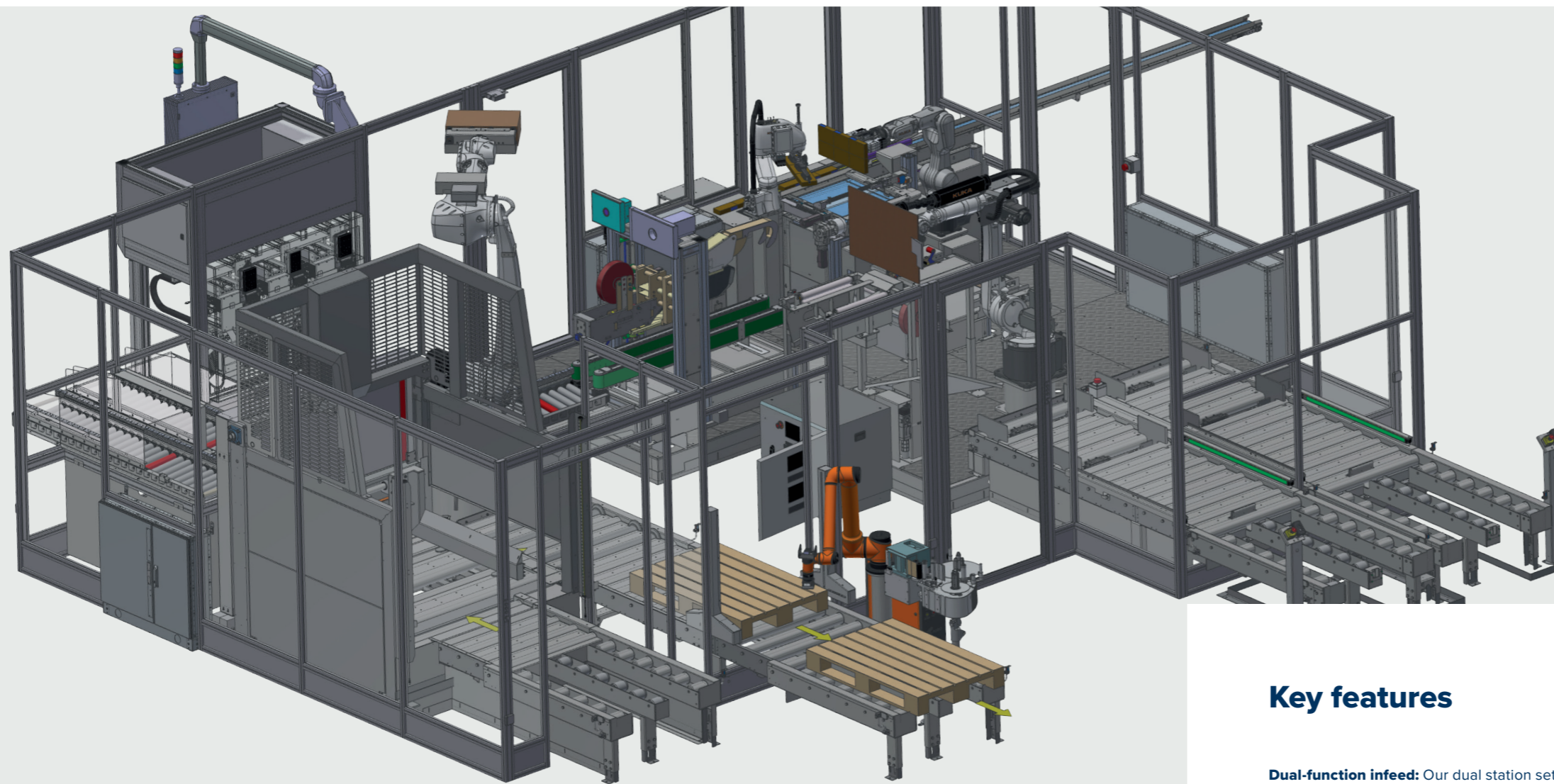
Dual in-feed pallet stations: Equipped with barcode scanners for seamless operation and maximum throughput.

Vision-enhanced depalletizing robot: Provides precision handling with advanced vision technology for reduced waste and improved quality.

Innovative tray handling: Features a unique tool combining vacuum and pneumatic technologies to ensure safe and efficient tray handling.

Efficient out-feed: A servo lift tower swiftly manages empty trays, maintaining a clutter-free production area.





TRANSFORM YOUR PACKING LINE WITH OUR AUTOMATED SOLUTION

Take your packing operations to the next level with our high-tech automatic pen carton packaging and palletizing unit. Designed for supreme efficiency and unmatched accuracy, our unit is ideal for businesses looking to scale up their packaging quality and throughput.

Key features

Dual-function infeed: Our dual station setup accepts both shipper boxes and EURO-pallets, offering versatility for automated guided vehicles (AGV) or manual loading.

Automated shipper box setup: Boxes are automatically erected, streamlining the process and preparing for instant carton insertion.

Scara-robot efficiency: The advanced Scara-robot assembles pen cartons in intricate patterns, ensuring each pack is perfectly arranged.

Precision filling: Vacuum suction technology allows for the meticulous placement of goods into shipper boxes, reducing waste and saving time.

Seamless sealing and palletizing: Our integrated system seals box tops and the palletizing robot ensures smooth transition onto pallets, ready for shipping.

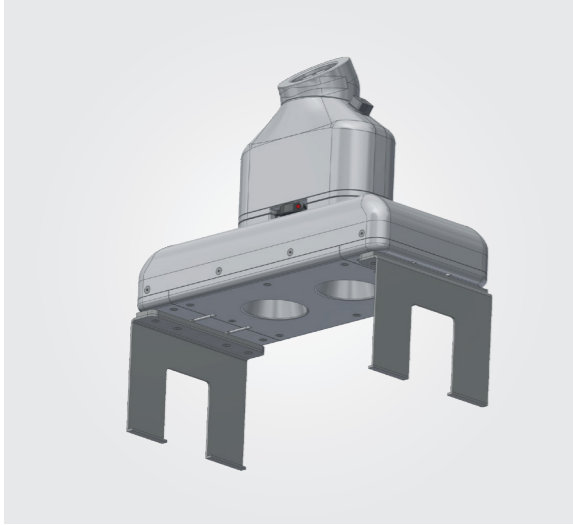
Labeling accuracy: Apply and verify 3 to 4 labels per box with confidence, thanks to our sophisticated vision control system.

Advanced pallet labeling: The Cobot aids in the nuanced task of applying pallet frame labels with precision.

Efficient pallet handling: A single out-feed station efficiently manages full pallets, maintaining productivity.

Servo-driven convenience: Enjoy a hassle-free pallet prep with our servo-driven pallet magazine, accommodating both AGV and manual approaches.

Quality control conveyors: Defective labels are swiftly identified, and boxes rerouted, ensuring your product meets the highest quality standards.



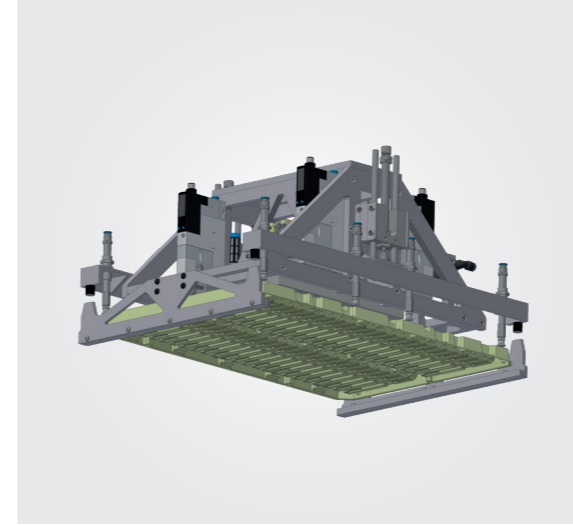
Palletizer

Cobot tool for palletizing smaller pen trays. Trays can be taken and stacked to a height of 3-5 pcs. Pneumatically operated stainless steel grippers. Integrated vision camera and height sensor. Smooth surface in white 3D-extruded durable polyamide.



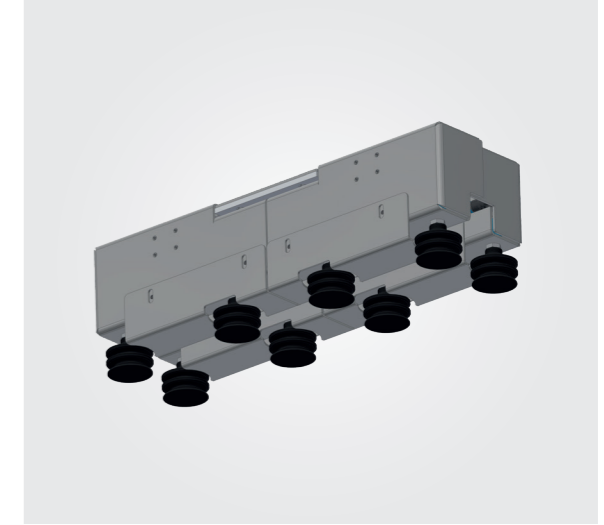
Depalletizer

Cobot tool for depalletizing large pen trays. equipped with 4 pneumatically operated side grippers. Includes an integrated height sensor and vision camera with light. Smooth surface in white 3D-extruded durable polyamide.



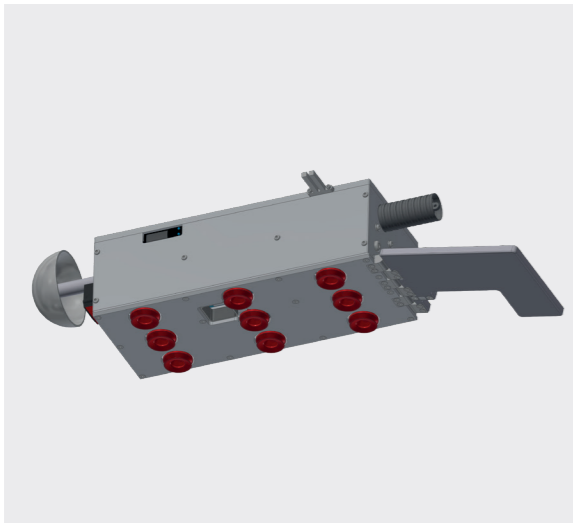
Depalletizer

Cobot tool for palletizing smaller pen trays. Trays can be taken and stacked to a height of 3-5 pcs. Pneumatically operated stainless steel grippers. Integrated vision camera and height sensor. Smooth surface in white 3D-extruded durable polyamide.



Shipper box palletizer tool

Cobot tool for depalletizing large pen trays. equipped with 4 pneumatically operated side grippers. Includes an integrated height sensor and vision camera with light. Smooth surface in white 3D-extruded durable polyamide.



Shipper box erector

Robot tool erector for plano shipper boxes, equipped with vacuum suction cups for excellent hold. Features a rear support arm for push through box bottom tapering. The tool housing in made of stainless steel for long indurance.



Empty large tray palletizer

Robot tool for palletizing of empty large pen trays, featuring vacuum suction cups ensuring a good tray hold. Integrated 2D-vision and height sensor. The tool frame is made of anocized aluminum and stainless steel.vision camera with light. Smooth surface in white 3D-extruded durable polyamide.



Scara carton muster builder

Robot tool erector for plano shipper boxes, equipped with vacuum suction cups for excellent hold. Features a rear support arm for push through box bottom tapering. The tool housing in made of stainless steel for long indurance.



Palletizer and de-palletizer

Robot tool for palletizing of empty large pen trays, featuring vacuum suction cups ensuring a good tray hold. Integrated 2D-vision and height sensor. The tool frame is made of anocized aluminum and stainless steel.vision camera with light. Smooth surface in white 3D-extruded durable polyamide.



SALES AND PROJECT MANAGEMENT

At Sealing System, we are dedicated to bringing our expertise and extensive experience directly to you. We are committed to collaborating closely to design and implement the best solution for your needs, ensuring high operational availability and quality.

Do not hesitate to contact us.

+45 7529 2092



Sealing System A/S



**SEALING
SYSTEM
INTELLIGENT
PACKAGING
SOLUTIONS**

Sealing System A/S
Hedemarken 1
DK-7200 Grindsted
sales@sealing-system.dk

+45 75 29 20 92
www.sealing-system.dk